
NEWSLETTER

Issue 8, Term 2, 2019

Murray Bridge North School

North Tce, Murray Bridge, SA 5253 T: 8532 3055 F: 8531 0004

W: www.mbnorthps.sa.ed.au

E: dl.0299@schools.sa.edu.au



Upcoming Events

For more events see planner

16th June

Pedal Prix at Victoria Park

17th June

Year 7 High School Transition

27th June

Basketball Carnival

Reconciliation Week marks an important week on the Australian calendar and is marked by a number of events across the school site and within the community.

The theme for this year is ;

GROUNDING IN TRUTH: WALK WITH COURAGE.

After an early morning flag raising ceremony at the front of the school by students, the whole school congregated in the hall for the Reconciliation Assembly and was led by students and the Nunga staff.

In her words, ACEO Felicia Kartinyeri opened with a heartfelt speech that set the theme and tone. Words that we can all consider and reflect on.

“We all know before any relationship and friendships are made that we must be truthful first, right?”

No matter how hard it is to speak or if you are afraid of what people might say, we shouldn't let that stop us from saying how we feel or think. We can do this in respectful ways to open the opportunity for truthful talks of what really matters to our people when Krinkigar (non-Nungas) came to our land uninvited, our break up of families, stopping our cultural practices and the loss of our language.

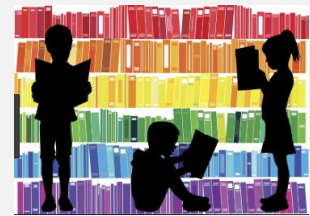
It's a week to reflect, remember and embrace the land, respect our culture, work on continuing to heal the past, improve our relationships towards understanding one another, be able to share our true Australian History, even if they are sad stories and here at our school experience working together to move forward. “

The assembly continued to focus on the theme, with songs and story, followed by a walk around the outside of the top oval, reflecting the theme: Walk together in courage.

Across the week there has been a program of activities for teachers and student to engage in. Reports of these activities will be included in the next newsletter, along with accompanying photography.

Reading is our School Priority

Every child attending North School is expected to read aloud to an adult every day.



**Government
of South Australia**

Department for Education

More important information

Winter warmers

Next week marks the beginning of winter. There is no doubt that the days have become colder rather quickly. Just a reminder that while inside classrooms are warm, and that students don't always need a jumper. The conditions are cold outside and the wind is bitter. Wearing appropriate clothing is important, with hats/ beanies and jackets included, so that students can comfortably play during break times.

Parent Grievance

Please be reminded to contact the class teacher in the first instance about a concern or issue that you may have about your child and his or her learning and wellbeing. The classroom teacher is the person who knows your child best, and can work together with you and your child in partnership.

Often the first contact about an issue to the school is to the Principal or another member of the leadership team. Given the number of students at the school and the number of teachers it is not possible to have all that information and be aware of everything. First contact with the teacher is important. Teachers take their roles very seriously, and without knowing of concerns and issues are not able to help in the solution. We seek your support in working through this important first step.

Of course if after meeting with the teacher, the issue does not appear to be resolved it is important to contact the school to make a time to meet with the Principal or a delegated member of the Leadership Team. The front office staff will take your call and support you in taking a message and or making a time. You may be asked some clarifying questions as to what the issue may be about. This will help the front office staff, in who to direct the information to.

Please be mindful that the school is a very big and busy school site and that all staff have many roles and duties to perform on a day to day basis, including attending days out of the school that relate to their roles. Messages are passed on in writing, and will be responded to timely, but not immediately. We seek your patience in this regard.

Notes From North

Head Lice

Please remember to check your child's hair for headlice and treat them before sending them to school.

PARENT CLUB FUNDRAISER

We are holding the 5c challenge, the 5c challenge basically encourages the students to bring in as many 5c pieces as they can find lying around the house, in the car, fallen between the seats in the lounge etc. (with parents/caregivers permission of course!). The class with the most money collected will get rewarded at the end of the Term 2.

School Zones

Reminder It's 25km/h when children are present



Continued:

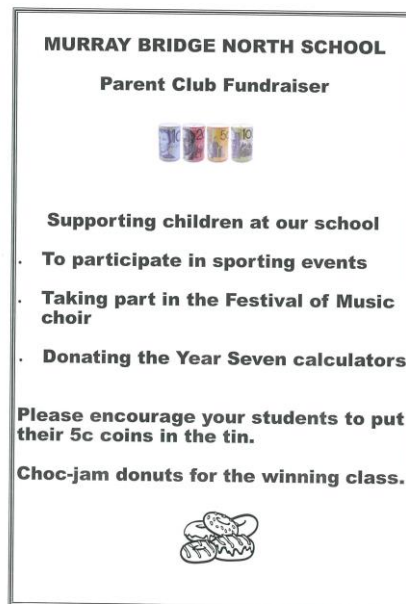
ILLNESS

There is no doubt that winter illnesses are making their rounds of the school. This has been evident in both the number of students and staff alike who have been absent. If what we have been told about the Flu season in the media, comes to pass, we can expect further and increased absence. Whilst we are always pleased to see great student attendance, we seek your support in keeping sick children at home, seek appropriate medical attention and that the return to school is on the advice of the medical practitioner.

Student Free Day / Staff training day

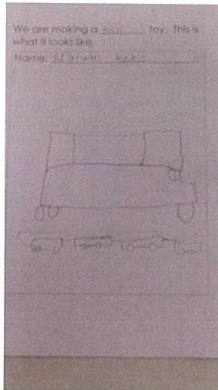
Please be aware that Governing Council has endorsed the site request for a student free day. The date is Tuesday 11th June. This time coincides with the June long weekend, and has been selected to maximise the training needs of both teachers and student support offices within the site.

Our day will consist of work around the training and writing of One student One Plan (OCOP) throughout the morning. The afternoon will schedule time for focus groups across the site to work on identified priorities. This will be an invaluable time for staff to engage in and work collaboratively.



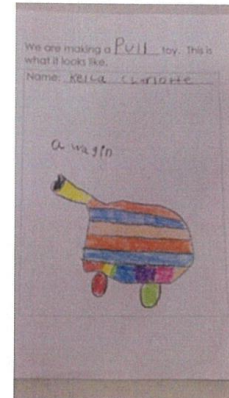
Welcome to 4.5

Mrs Densley



Design Technology

4.5 students have had a great start to the year and term 2. We have been exploring push and pull motions and forces. Students have designed a push and pull toy and will be making these in the near future. We cannot wait to present and test these designs.



Art has been so much fun!

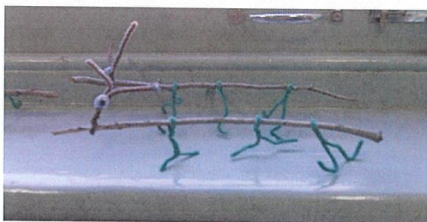
We have a class pet and his name is Bluey. Bluey is a stick insect and he has been our inspiration to keep us on track with our learning. Mrs Frahm, Placement Teacher, has shown us how to make stick insects using sticks, pipe cleaners and googly eyes.

Can you see the stick insect?



This is Bluey our class pet.

Can you see the insects we've made? What do you know about stick insects?



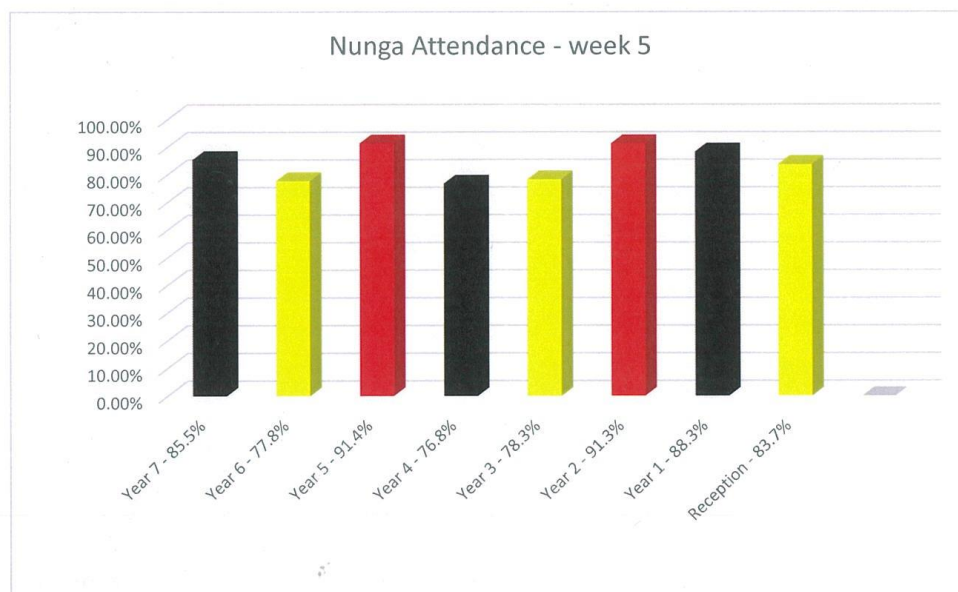
Aboriginal Education

Attendance

This year the Ab-Ed Team is displaying our popular attendance though graphs. The graphs will show all year levels each week. If your child is absent please contact the school or the Ab-Ed Team by phone on **85323055 or txt 0427259501.**

Congratulations to our Year 5's! At the moment the year 5's are our highest attendance year level at 91.4%, keep up the good work! Second is the year 2's at 91.3% and Third is the 1s's at 88.3%.

Our overall Nunga percentage is sitting at 84.1% this is not where we want our children to be and we need to lift our attendance overall to 92% or higher! The same with of our each year levels.



Please come in and have a yarn with us if you have any questions or if you would like more information on your children and how we could help lift their attendance.

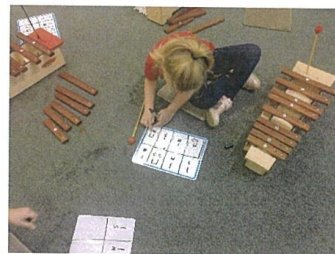
Anu Nguni, The Ab-Ed Team.

Music at North School from the Junior Primary Music Teacher

Music lessons at North School have seen Receptions, Year 1's and Year 2's investigating beat, rhythm (words and syllables), pitch (high and low), dynamics (loud and soft sounds), dance and movement to art music with musical form (how a piece of music is structured). We have also performed in class and in whole school assembly, notably the Harmony Day song "Everyone Belongs," and singing and signing our National Anthem "Advance Australia Fair."



Mrs. Lee's class have been investigating the use of pitches they now know (so and mi from the solfege system) and rhythms (titi and ta). They know to write their own compositions for xylophone. By the end of year 2, these students should be able to use the music staff to read and write music.





Brax, Landon and Jeremy from Team Awesome special options class playing the "high/low" notes from the song "See Saw."

They watched Mr. Crichton's senior primary class playing in a whole class ensemble for

inspiration before coming back to class and identifying the correct notes to play the song "See Saw." Brax played the "high" note independently.



Part of the electives program has included a Rap and urban Poetry group, a small choir singing group and a keyboard music group, which has started this term.

In the picture opposite, Bailey George and Toby Betts performing a rap written by Bailey.



Ngarrindjeri Kaikulun Rrugiyun Choir (Ngarrindjeri Singing and Dancing) is part of the music program and rehearses Thursday's after lunch. We have had good numbers attending and we are developing our performance abilities for assemblies and public events.

Ngarrindjeri Kaikulun Rrugiyun Choir rehearsing

Peter Dickinson, Junior Primary Music Teacher, Murray Bridge North R-7 School.

MBNS Term 2 Planner

| WEEK | Monday | Tuesday | Wednesday | Thursday | Friday | Sat/Sun |
|-----------|--|--|---|---|---|--|
| 1 | 29/4 Student Free Day No School | 30/4 First Day of Term 2 | 1/5 | 2/5 | 3/5 | 4/5 – 5/5 |
| 2 | 6/5 Parent Club Meeting at 3:30pm in Library | 7/5 | 8/5 | 9/5 | 10/5 | 11/5– 12/5 Mother Day |
| 3 | 13/5 NAPLAN Online Testing Years 3,5,7 | 14/5 Governing Council 6pm-7pm NAPLAN Online Testing Years 3,5,7 | 15/5 NAPLAN Online Testing Years 3,5,7 | 16/5 NAPLAN Online Testing Years 3,5,7 | 17/5 NAPLAN Online Testing Years 3,5,7 | 18/5 – 19/5 |
| 4 | 20/5 NAPLAN Online Testing Years 3,5,7 | 21/5 NAPLAN Online Testing Years 3,5,7 | 22/5 NAPLAN Online Testing Years 3,5,7 | 23/5 NAPLAN Online Testing Years 3,5,7 | 24/5 NAPLAN Online Testing Years 3,5,7 | 25/5 – 26/5 |
| 5 | 27/5 Reconciliation Week Assembly 9:15am | 28/5 | 29/5 | 30/5 | 31/5 | 1/6 – 2/6 |
| 6 | 3/6 | 4/6 | 5/6 | 6/6 | 7/6 | 8/6 – 9/6 |
| 7 | 10/6 PUBLIC HOLIDAY Queen Birthday | 11/6 STUDENT FREE DAY NO SCHOOL | 12/6 | 13/6 | 14/6 | 15/6 – 16/6 Pedal Prix at Victoria Park |
| 8 | 17/6 Year 7 Transition into High School Information Night 7:15pm-8:30pm | 18/6 Governing Council 6pm-7pm | 19/6 | 20/6 | 21/6 | 22/6– 23/6 |
| 9 | 24/6 | 25/6 | 26/6 | 27/6 Basketball Carnival | 28/6 | 29/6 – 30/6 |
| 10 | 1/7 | 2/7 | 3/7 | 4/7 | 5/7 Last Day Of Term 2 Early Dismissal 2:10pm | 6/7 – 7/7 |

Murray Bridge North School OSHC

Before School, After School and
Vacation Care Programs.

Catering for your needs on your local school site

Open daily 630am and close 6.30pm

This service will operate a 6am start if there is a demand. Please contact the service or school to register your interest.



Quality care, competitive prices,
fun activities, friends to be made, games, arts, crafts, good food and special events all in
a home like environment.

Contact OSHC 08 85310179 or 0417825455



North School Playgroup

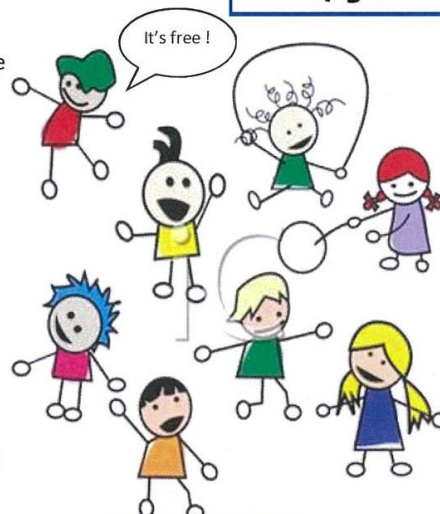
Murray Bridge North School and *Learning Together* run a playgroup for families with young children. Come and meet with other parents while your children play and make friends.

In the OHSC room
Every Tuesday during school term
9.30am - 11.30am

- Healthy snack provided
- Suitable for babies to kindy age
- Art and craft - music and dance

The playgroup program is supported by Early Childhood Educators with a focus on children's play and learning. There is no need to book, just come. We look forward to seeing you there.

For more information contact Learning Together on 0423 020 991.



Learning Together
Murray Bridge



San Chi Ryu is a Reality Based Martial Art System that combines 'full contact' Karate, Ju-Jitsu and Kobudo [Weaponry] allowing each student to adapt to whichever fighting style best suits them.

- Teaching practical & effective self defense
- Suitable for all ages, genders and fitness levels
- Founder & Chief Instructor, Shihan Michael Bradford, 6th Dan Black Belt - Master
- National Accredited Instructor / Coach
- First Aid Qualified
- Fully Insured



**TUESDAYS AND THURSDAYS
6:00PM TO 7:30PM**

**GUIDE HALL,
19 STANDEN STREET,
MURRAY BRIDGE,
SOUTH AUSTRALIA**

PH: 0448 229 703





Program for the Day

The forum is to inform and engage with parents or carers about the services and support available for children and young people with a disability and to listen to the voices of their families.

- 9:30 – 10:00** Sign on through SERU reception – have a look and borrow resources
Meet & greet, tea or coffee in Fulham Gardens Primary School Performing Arts Centre
- 10:00 – 11:00** Welcome *Ian May, Director, Disability Policy and Programs*
The Parent Forum Reference Group – introduction
Table talk and sharing with parent reference rep

Departmental structures and news
- 11:00 – 12:00** Commissioner of Children and Young People Project "Children Living with Disability"
Helen Connolly, Commissioner of Children and Young People
- 12:00 – 12:45** Lunch – provided *Meet, eat and share*
- 12:45 – 1:45** Workshop session 1 (Select one)
 - A. Social skills strategies - *Libby Brown, Manager Special Education Resource Unit*
 - B. Support Service Educational Psychologist - the what, how, who, where and why? – *Jess Ward and Caitlin Gray, Education Department Psychologists*
 - C. Strategies and support in setting goals for your child's One Plan – *Rachel Scheuboeck, Parent of a child with disability and Senior Advisor, Special Education Resource Unit*
 - D. Practical strategies to understand and support emotional regulations – *Caitlin Leon, Project Officer, Interception*
 - E. Visit the Special Education Resource Unit – *Anne Arnold, Senior Advisor Teaching and Learning*
 - F. Support Services Speech Pathologist – The role of an educational speech pathologist and their work with preschools, schools and agencies - *Kathryn Halyburton, Education Department Speech Pathologist*
- 1:45 – 2:00** Move back to Performing Arts Centre for summary and close of the day with Ian May



Disability Policy and Programs PARENT FORUM Friday 21st June 2019

Disability Policy and Programs Parent Forum

You are invited to a Parent Forum for parents or carers of a child or young person with a disability on Friday 21st June 2019 hosted by the Department for Education.

The theme for the day is:

"Parents as drivers of change"

- ❖ Meeting your new Parent Reference Group and networking with other parents – a time to have your say
- ❖ The state of our state – what is happening? Helen Connolly Commissioner for Children and Young People
- ❖ Our department – Departmental news. Ian May, Director Disability Policy and Programs
- ❖ Workshops - being supported in partnership with your preschool or school

WHEN: Friday 21st June 2019 9:30 am – 10:00 am Register/tea/coffee
10:00 am – 2:00 pm Parent Forum

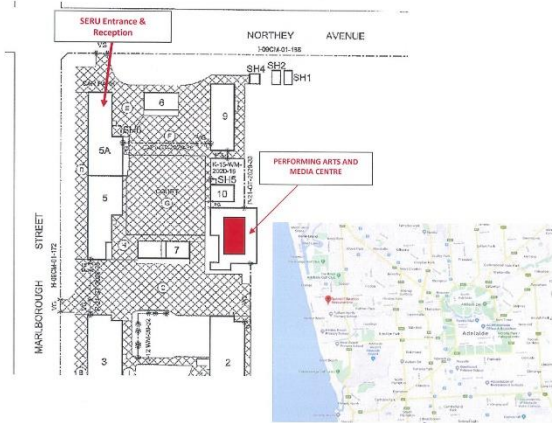
WHERE: Special Education Resource Unit & Fulham Gardens Primary School
Performing Arts Centre
72A Marlborough Street, Henley Beach SA 5022

HOW: Register for the forum at <https://register.eventarc.net/e/42874>
If you have any queries please contact Julie.cakebread68@schools.sa.edu.au at the Special Education Resource Unit or by Phone (08) 8235 2871.

A light lunch will be provided for registered participants. A map of the site and parking areas is attached. A detailed program will be forwarded on confirmation of your booking.



Location and access to the Special Education Resource Unit (SERU)



Location and access to the Special Education Resource Unit (SERU)

Parking and Registration

Parking is available in Northey Avenue, Marlborough Street and surrounding streets.

The entry to the conference is via the Special Education Resource Unit entrance and reception office from Northey Avenue. You will be greeted at SERU where you can sign in before being shown through to the conference room in the grounds of Fulham Gardens Primary School.

Buses

The H33 bus travels to and from the city via Marlborough Street. Stop 27 is the closest bus stop to SERU.

Disability Policy and Programs Parent Forum

WHEN: Friday 21st June 2019 Time: 9:30am to 2:00pm

WHERE: Special Education Resource Unit & Fulham Gardens Primary School
Performing Arts Centre
72A Marlborough Street, Henley Beach SA 5022

Register for the forum at <https://register.eventarc.net/e/42874>

If you have any queries please contact Julie.cakebread68@schools.sa.edu.au at the Special Education Resource Unit or by Phone (08) 8235 2871.

Parent Forum Workshop precis

Select one workshop

Each workshop will be held for an hour and include a presentation, time to discuss and ask questions

- A. **Social Skills strategies** – Libby Brown, Manager, Special Education Resource Unit
The session will look at the hierarchy of social skills and look at why a child might behave the way they do and then explore how you as a parent can support your child to develop the skills they need. Libby is an educational psychologist and the manager of SERU.
- B. **Spotlight on Student Support Services** – Education Department Psychologists, Jess Ward and Caitlin Gray
Find out what is their role, how can their services be accessed, what assessment do they carry out, information about special options, how they support teachers and working with other agencies? Listen to their story and then ask your own questions.
- C. **Strategies and support for setting goals for your child's One Plan** – Rachel Scheuboeck, Parent, and Project Officer, Special Education Resource Unit
Rachel is a parent of a child with a disability as well as an educator and will share the strategies she used in the planning and participating in setting goals for her child's One Plan (or equivalent plans) meeting. The session will provide you with information, give you time to discuss with others and support to empower you with your child's learning plan.
- D. **Practical strategies to understand and support emotional regulations**– Caitlin Leon, Project Officer, Interception
Caitlin will be presenting on regulation scales and how this resource can be used in the classroom setting. This presentation will also include information about interception and how parents/caregivers can use these activities at home or in a school setting.
- E. **Visit Special Education Resource Unit** – Anne Arnold, Senior Advisor Teaching and Learning
Take the opportunity to browse through the resources and borrow resources that you can share with your child, become a member and find out what SERU offers.
- F. **Spotlight on Student Support Services** – Education Department Speech Pathologist, Kathryn Halyburton
Find out what is their role, how can their services be accessed, what assessment do they carry out, placement in special options and working with other agencies (therapists funded by NDIS)?

DANCE CLASSES

Recreational dance classes for 18 months and up of all experience levels!

Experience a fusion of Jazz, Hip Hop and Contemporary dance with ballet fundamentals.

FREE Trial Class
NO costume making
NO expensive shoes
Family DISCOUNT
32 Locations

inspiration lives here.

celebrating individuality diversity & creativity



Enquiries
0408 988 483
info@dancesa.com.au
www.dancesa.com.au



DANCE SA
SCHOOL OF PERFORMING ARTS
inspiration lives here.

Location near you:
**Murray
Bridge**

